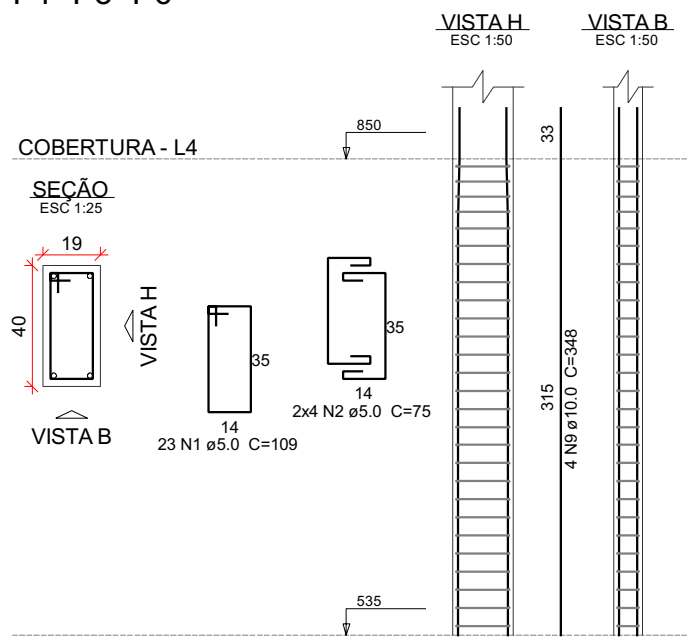
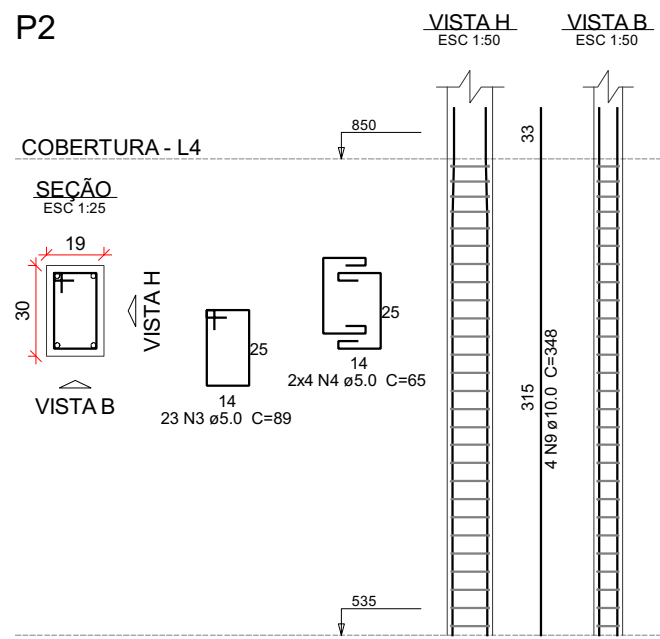


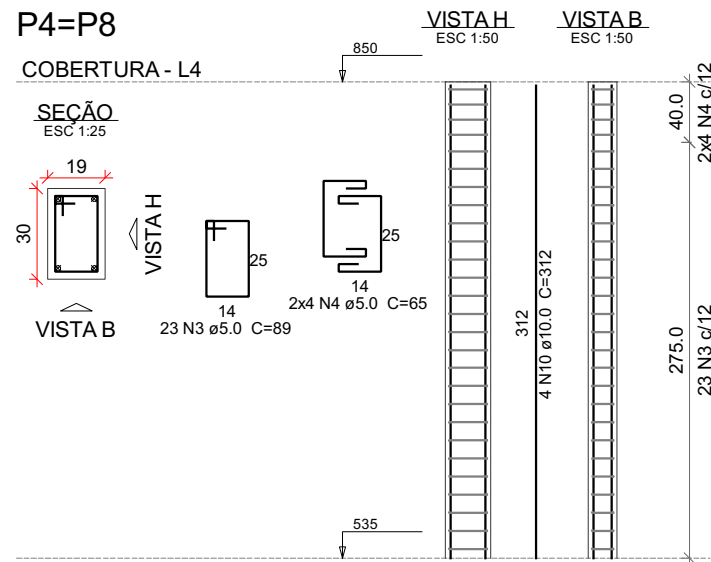
P1=P5=P6



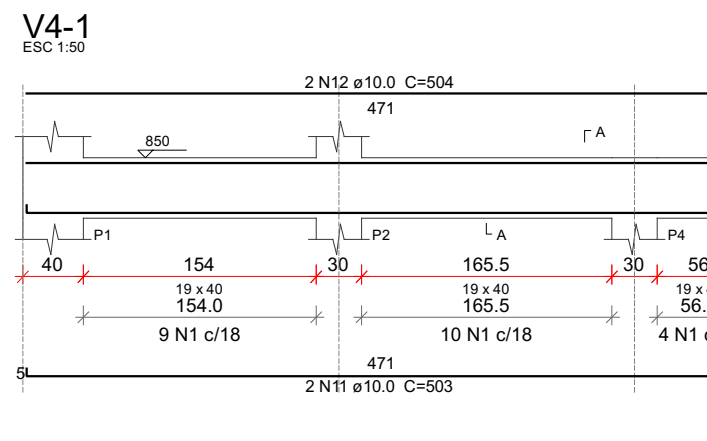
P2



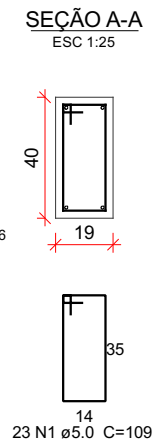
P4=P8



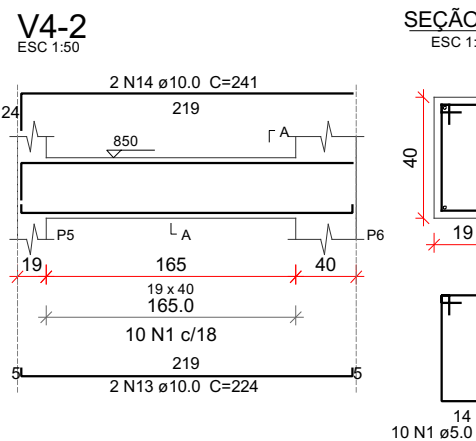
V4-1



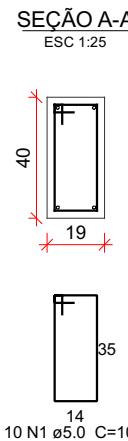
SEÇÃO A-A



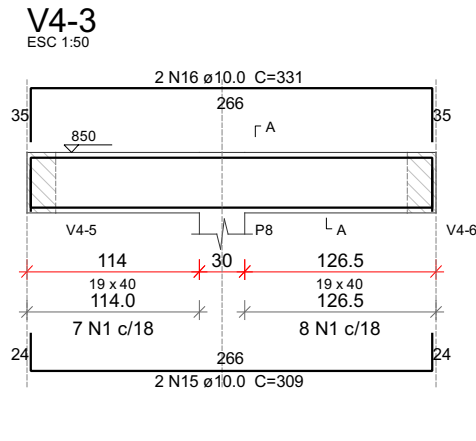
V4-2



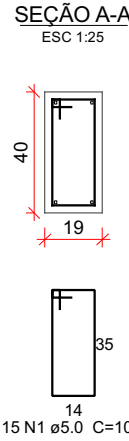
SEÇÃO A-A



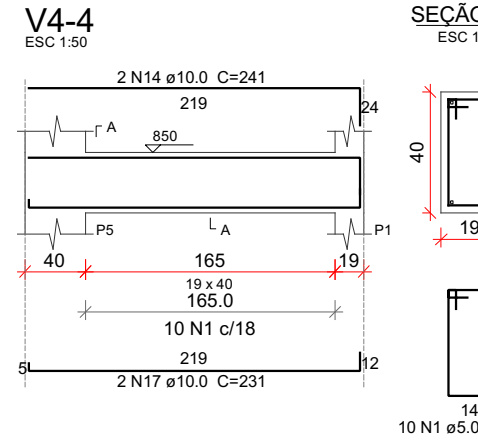
V4-3



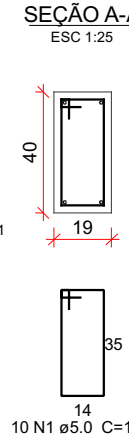
SEÇÃO A-A



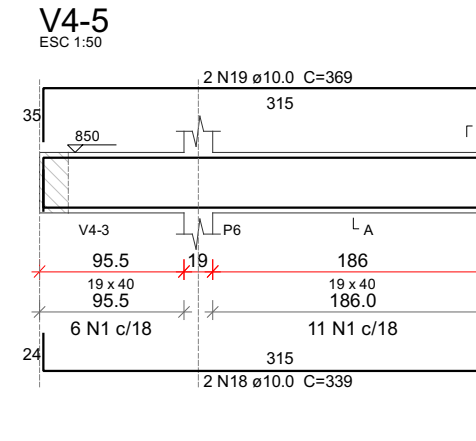
V4-4



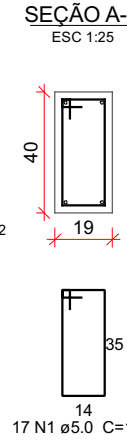
SEÇÃO A-A



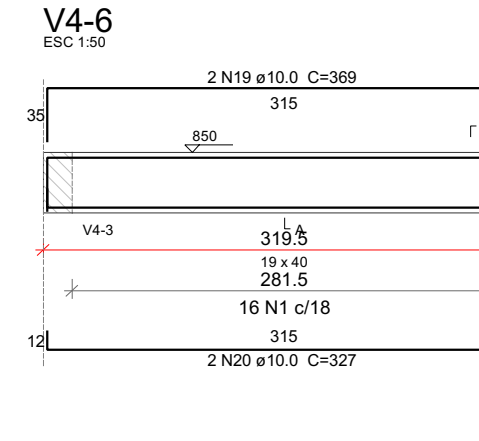
V4-5



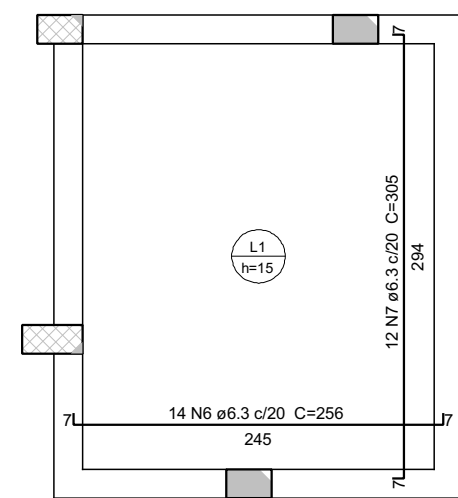
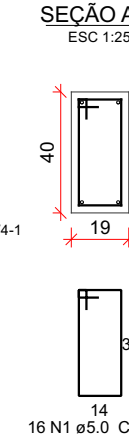
SEÇÃO A-A



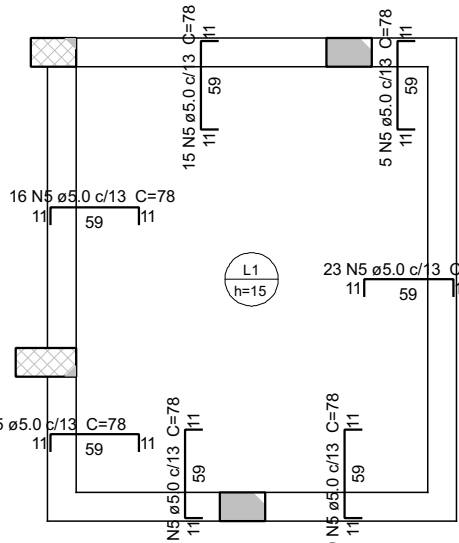
V4-6



SEÇÃO A-A

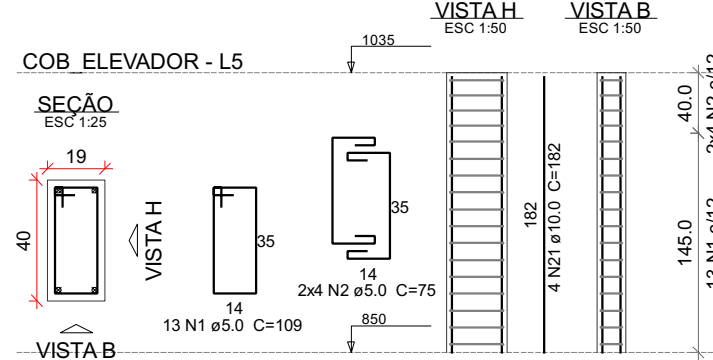


ARMAÇÃO POSITIVA DAS LAJES DO PAVIMENTO COBERTURA  
escala 1:50

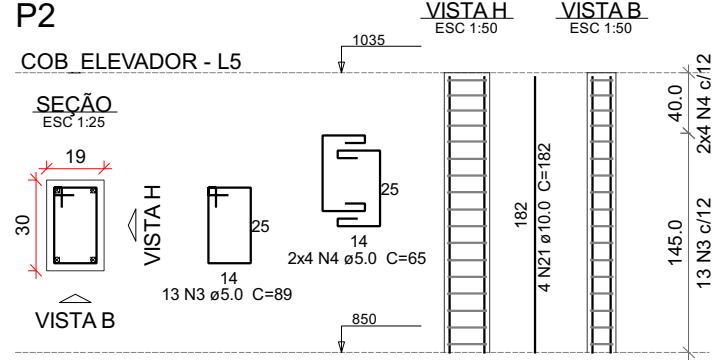


ARMAÇÃO NEGATIVA DAS LAJES DO PAVIMENTO COBERTURA  
escala 1:50

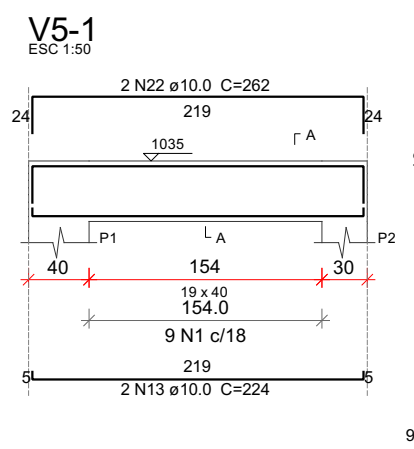
P1=P5=P6



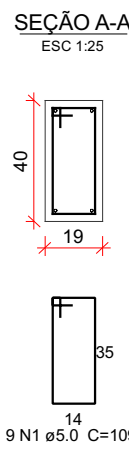
P2



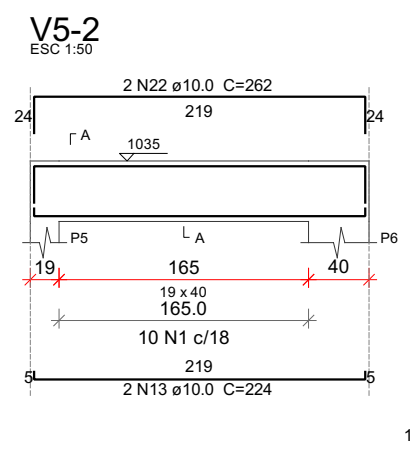
V5-1



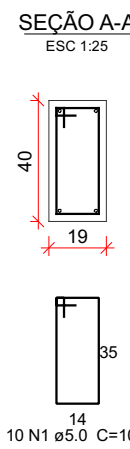
SEÇÃO A-A



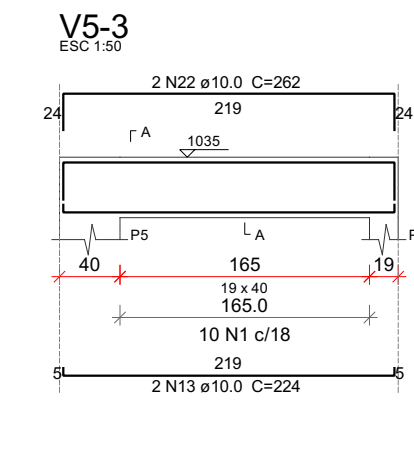
V5-2



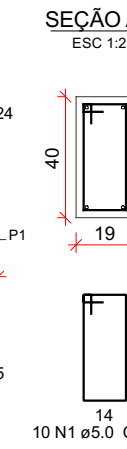
SEÇÃO A-A



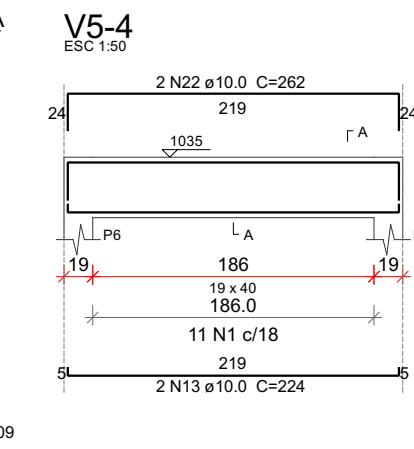
V5-3



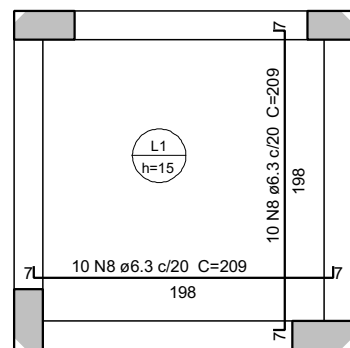
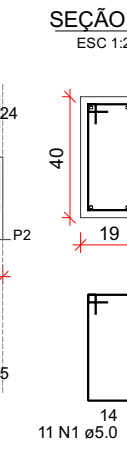
SEÇÃO A-A



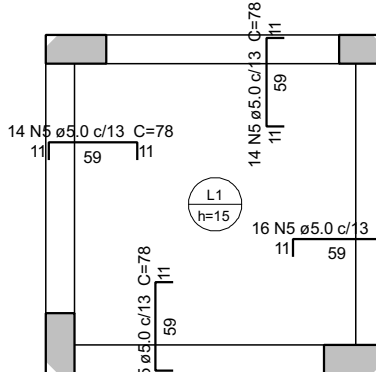
V5-4



SEÇÃO A-A



ARMAÇÃO POSITIVA DAS LAJES DO PAVIMENTO COB. ELEVADOR  
escala 1:50



ARMAÇÃO NEGATIVA DAS LAJES DO PAVIMENTO COB. ELEVADOR  
escala 1:50

Relação do aço

COBERTURA:		Negativos		3xP1	
		Positivos		2xP4	
		V4-2		V4-1	
		V4-4		V4-3	
		V4-6		V4-5	
COB. ELEVADOR:		Negativos		3xP1	
		Positivos		2xP4	
		V5-1		V5-2	
		V5-3		V5-4	
AÇO	N	DIAM (mm)	QUANT	C.UNIT (cm)	C. TOTAL (cm)
CASO1	1	5.0	239	109	26051
	2	5.0	48	75	3600
	3	5.0	82	89	7298
	4	5.0	32	65	2080
	5	5.0	143	76	11154
CASO5	6	6.3	14	256	3584
	7	6.3	12	305	3660
	8	6.3	20	349	6996
	9	10.0	10	209	4180
	10	10.0	8	312	2496
	11	10.0	2	603	1206
	12	10.0	2	504	1008
	13	10.0	10	224	2240
	14	10.0	4	241	964
	15	10.0	2	309	618
	16	10.0	2	331	662
	17	10.0	2	231	462
	18	10.0	2	339	678
	19	10.0	4	369	1476
	20	10.0	2	327	654
	21	10.0	16	182	2912
	22	10.0	8	282	2256

Resumo do aço

AÇO	DIAM (mm)	C. TOTAL (cm)	PESO (kg)
CASO	6.3	114.3	28
CASO	10.0	228.4	140.8
CASO	5.0	581.9	77.3
PESO TOTAL (kg)			
CASO	168.8		
CASO	77.3		
Volume de concreto (C-30) = 4.91 m³			
Área de forma = 57.55 m²			

Nº	Comentário	Data	Autor
0	Emissão inicial		



E + Plan Engenharia Ltda Me  
CNPJ: 15.018.870/0001-65  
Registro no CREA/SC: 127.622-8  
www.emais.eng.br - contato@emais.eng.br  
Fone: (48)3093-9350  
Rua Nalja Carone Goedert, nº 1080 - Sala 1001/1002  
Ed. City Office Square Passa Vinte - Faltosa - SC



SERVICO SOCIAL DO COMÉRCIO  
DEPARTAMENTO REGIONAL  
SANTA CATARINA

Rua Felipe Schmidt, 785 - Centro - Florianópolis  
CEP: 88.015.020 - Fone/Fax: (48) 3231-4800  
sesc-sc@sesc-sc.com.br

Projeto

**ESTRUTURAL**

Local: SESC SÃO BENTO DO SUL

End.: RUA JORGE ZIPPERER, SÃO BENTO DO SUL / SC

Obra: SESC SÃO BENTO DO SUL

Conteúdo: DET. DOS PILARES, VIGAS E LAJES DO PAV. COBERTURA E PAV. COB. ELEVADOR

Proprietário: SERVIÇO SOCIAL DO COMÉRCIO  
CNPJ 03.603.595/0001-68

Resp. Técnica

Assinatura e Rubrica

Assinatura e Rubrica

Autor do Projeto

Prancha nº

Eng. Civil Dilnei de Freitas Jocinto  
CREA/SC: 122.825-5

Assinatura

Co-Autor do Projeto

ITEM	Descrição	Escala	Data
ACESSIBILIDADE_ELEVADOR	GUILHERME BARCELOS	Indicada	ABR/2026

5

Total