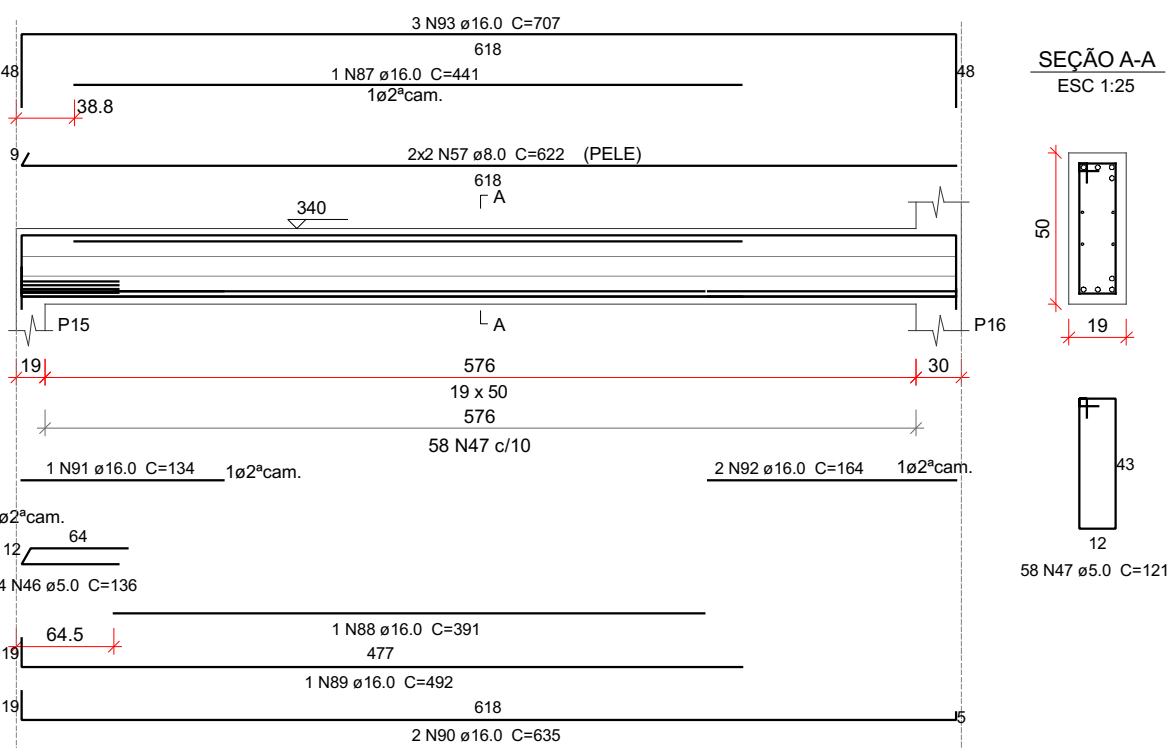


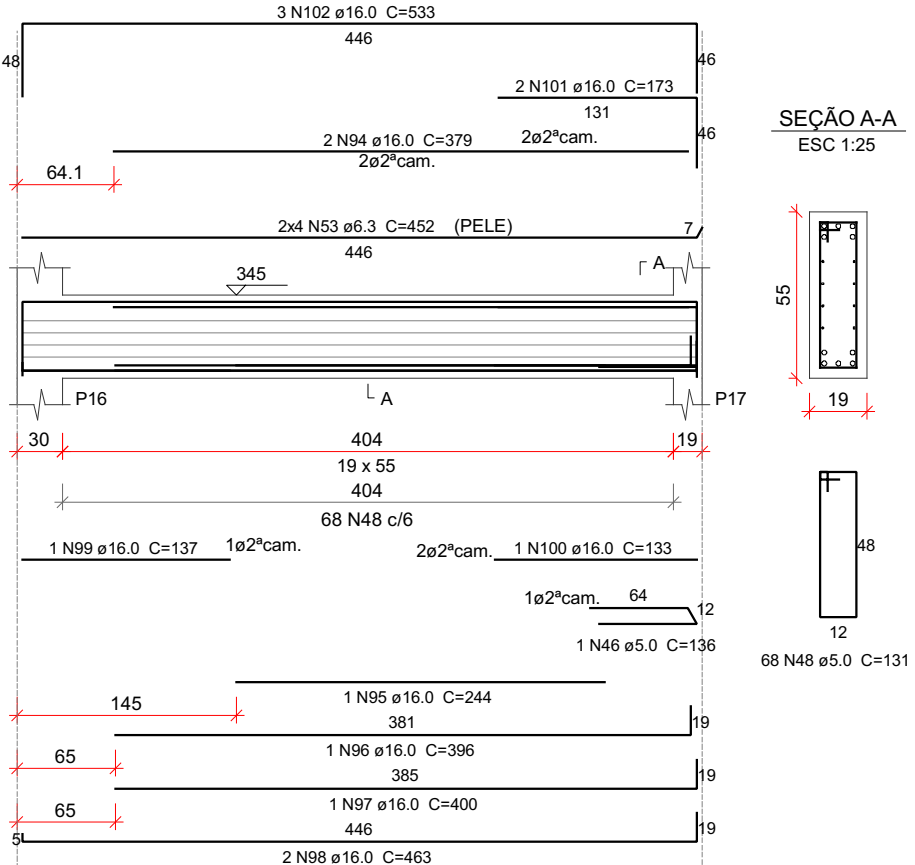
V2-12

ESC 1:50



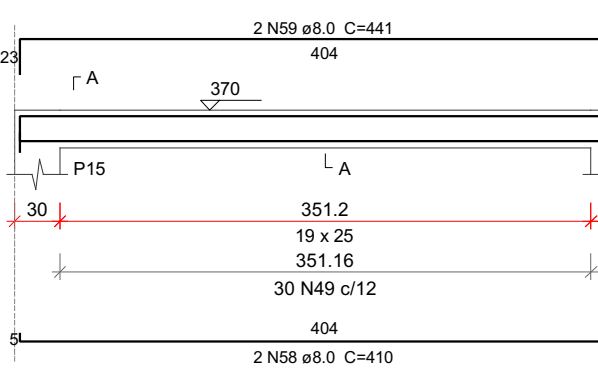
V2-13

ESC 1:50



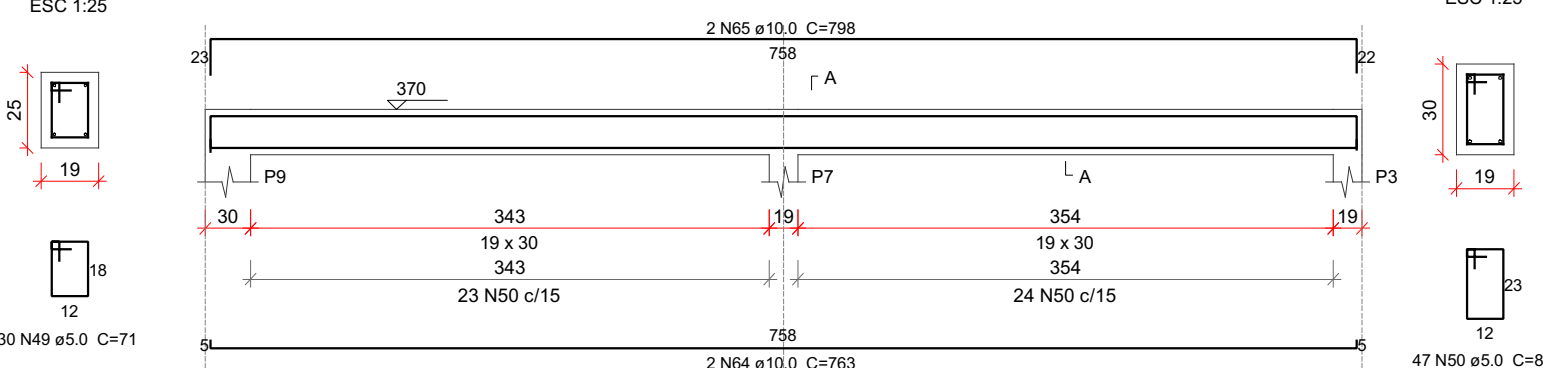
V2-14

ESC 1:50



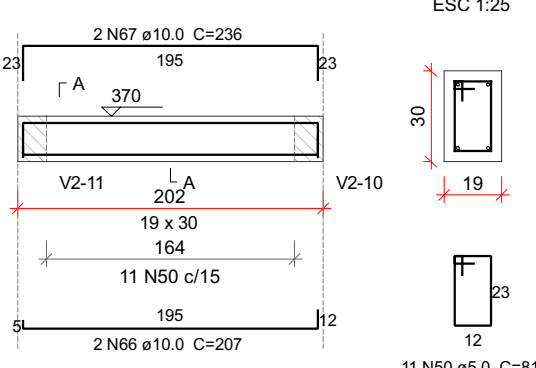
V2-15

ESC 1:50



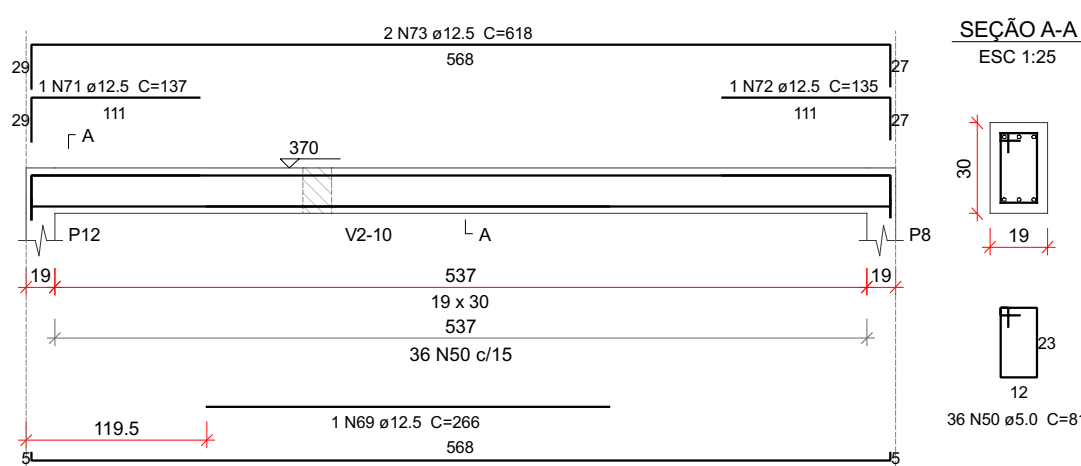
V2-16

ESC 1:50



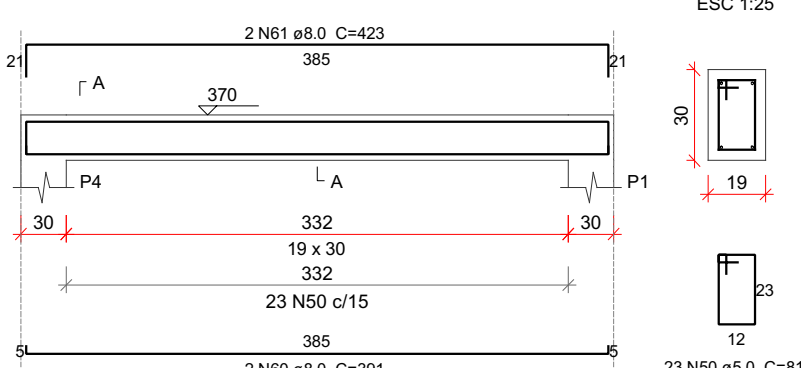
V2-17

ESC 1:50



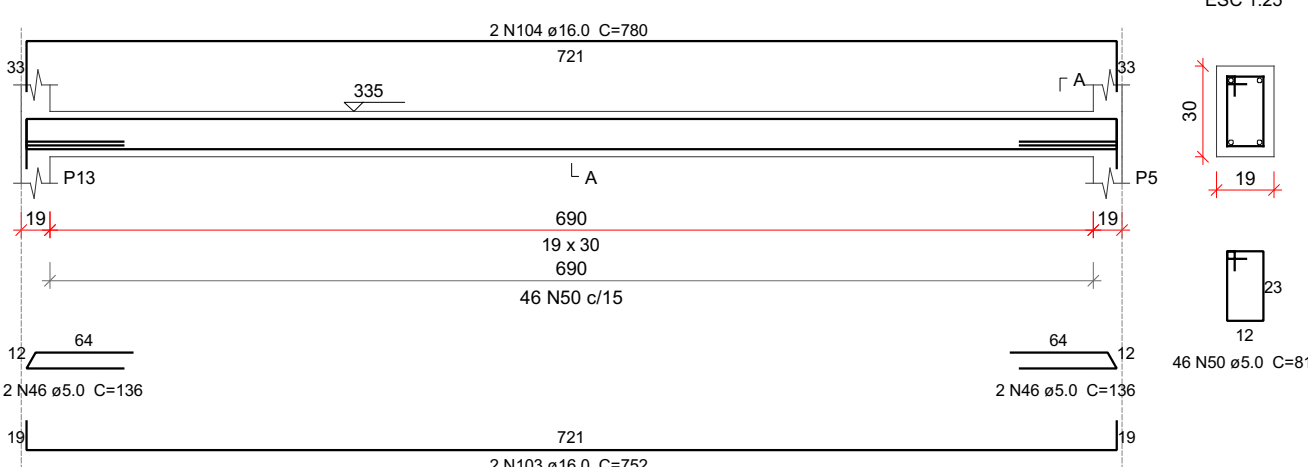
V2-18

ESC 1:50



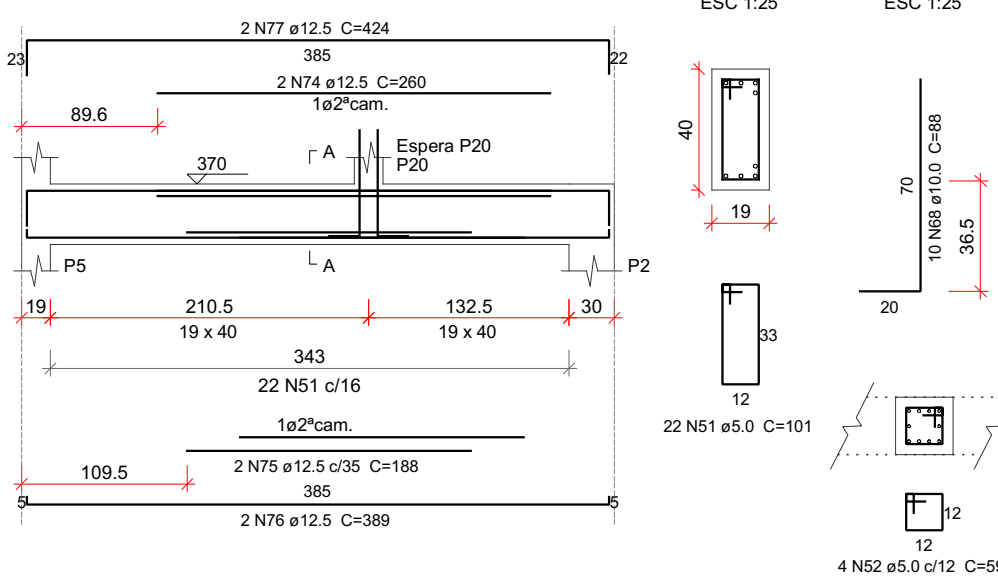
V2-19

ESC 1:50



V2-20

ESC 1:50



Relação do aço

AÇO	N	DIAM (mm)	QUANT	C.UNIT (cm)	C.TOTAL (cm)
CA80	46	5.0	9	136	1224
	47	5.0	58	121	7018
	48	5.0	68	131	8908
	49	5.0	30	71	2130
	50	5.0	163	81	13203
	51	5.0	22	101	2222
	52	5.0	4	59	236
	53	6.3	8	452	3616
	54	6.3	12	198	2376
	55	6.3	9	241	2169
	56	6.3	30	187	5610
	57	8.0	4	622	2488
	58	8.0	2	410	820
	59	8.0	2	441	882
	60	8.0	2	391	782
	61	8.0	2	423	846
	62	8.0	1	257	257
	63	8.0	2	246	492
	64	10.0	2	763	1526
	65	10.0	2	798	1596
	66	10.0	2	207	414
	67	10.0	2	236	472
	68	10.0	10	88	880
	69	12.5	1	266	266
	70	12.5	2	572	1144
	71	12.5	1	137	137
	72	12.5	1	135	135
	73	12.5	2	618	1236
	74	12.5	2	250	500
	75	12.5	2	188	376
	76	12.5	2	389	778
	77	12.5	2	424	848
	78	12.5	13	164	2132
	79	12.5	10	199	1990
	80	12.5	21	213	4473
	81	12.5	11	208	2288
	82	12.5	7	729	5103
	83	12.5	2	163	326
	84	12.5	2	78	156
	85	12.5	2	152	304
	86	12.5	2	644	1288
	87	16.0	1	441	441
	88	16.0	1	391	391
	89	16.0	1	492	492
	90	16.0	2	635	1270
	91	16.0	1	134	134
	92	16.0	2	164	328
	93	16.0	3	707	2121
	94	16.0	2	379	758
	95	16.0	1	244	244
	96	16.0	1	396	396
	97	16.0	1	400	400
	98	16.0	2	463	926
	99	16.0	1	137	137
	100	16.0	1	133	133
	101	16.0	2	173	346
	102	16.0	3	533	1599
	103	16.0	2	752	1504
	104	16.0	2	780	1560

Resumo do aço

AÇO	DIAM (mm)	C.TOTAL (m)	QUANT (Barras)	PESO (kg)
CA50	6.3	137.8	12	32.7
	8.0	65.7	6	25.9
	10.0	48.9	5	30.1
	12.5	235	20	226.4
	16.0	131.8	11	208
CA80	5.0	349.5	-	53.9

PESO TOTAL (kg)

CA50 524.2

CA80 53.9

Volume de concreto (C-35) = 4.7 m³

Área de forma = 49.73 m²

Nº	Comentário	Data	Autor
0	Emissão inicial		



E + Plan Engenharia Ltda Me

CNPJ: 15.018.870/0001-65

Registro no CREA/SC: 127.622-8

www.emais.eng.br - contato@emais.eng.br

Fone: (48)3093-9350

Rua Naja Carone Goedert, nº 1080 - Sala 1001/1002

Ed. City Office Square Passa Vinte - Faltosa - SC



SERVIÇO SOCIAL DO COMÉRCIO

DEPARTAMENTO REGIONAL

SANTA CATARINA

Rua Felipe Schmidt, 785 - Centro - Florianópolis

CEP: 88.010-001 - Fone/Fax: (48) 3231-4800

sesc-sc@sesc-sc.com.br

Projeto

ESTRUTURAL

Local FLORIANÓPOLIS / SC

End.: ESTRADA HAROLDO SOARES GUAVAN, N°1670, CACUPÉ

Obra CABANA NOVA

Conteúdo DET. DAS VIGAS E LAJES DO PAV. COBERTURA

Proprietário SERVIÇO SOCIAL DO COMÉRCIO

CNPJ 03.603.595/0001-68

Resp. Técnico

Assinatura e Rubrica

Autor do Projeto

Prancha nº

Eng. Civil Dilnei de Freitas Jocinto

CREA/SC: 122.825-5

Assinatura

Co-Autor do Projeto

ITEM

Desenho

GUILHERME BARCELOS

Escala

Indicada

Data

MAR/2026

10